

SPECIFICATION SHEET: Riverbed Steelhead® Product Family

Model Specifications: Riverbed Steelhead Appliances

Steelhead Appliances running RiOS™ version 4.0 software are available in 12 different models to suit the needs of any office.

	Small Office				Mid-Size Office				Large Office or Data Center				High Availability	Management																						
Model	50	100	200	300	520	1020	1520	2020	3020	3520	5520	6020	Interceptor 9200	Clustered ³	CMC 8000/ SMC 8500																					
Profile	Desktop	Desktop	Desktop	Desktop	1U	1U	1U	1U	3U	3U	3U	3U	3U	n x 3U	1U																					
WAN Capacity ¹	256Kbps	1 Mbps	1 Mbps	2 Mbps	1 Mbps	2 Mbps	4 Mbps	10 Mbps	20 Mbps	45 Mbps	155 Mbps	310 Mbps	4 Gbps	4 Gbps	N/A																					
WAN Capacity (High-speed) ¹	256Kbps	1 Mbps	1 Mbps	2 Mbps	1 Mbps	2 Mbps	4 Mbps	10 Mbps	20 Mbps	45 Mbps	800 Mbps	800 Mbps	-	-	-																					
Optimized TCP Connections ²	250	25	100	150	300	625	1,000	2,000	3,500	6,000	15,000	40,000	1,000,000	1,000,000	-																					
Total Disk	60 GB	60 GB	60 GB	60 GB	250 GB	250 GB	250 GB	500 GB	1.0 TB	1.5 TB	1.5 TB	3.2 TB	n x m	n x m	250GB																					
Data Store Capacity	35 GB	35 GB	35 GB	35 GB	80 GB	80 GB	80 GB	150 GB	250 GB	512 GB	700 GB	1.4 TB	n x m	n x m	N/A																					
RAID	-	-	-	-	-	-	-	-	✓	✓	✓	✓	✓	✓	-																					
Hot Swappable Disks	-	-	-	-	-	-	-	-	✓	✓	✓	✓	✓	✓	-																					
RAM	512 MB				2 GB				4 GB				6 GB				8 GB				16 GB				4 GB				-				2 GB			
Slots	-				-				1				-				3				3				-				-							
Max # of Bypass Ports	2				-				4				-				12				-				-											

Power & Physical Specifications

	Small Office				Mid-Size Office				Large Office or Data Center				High Availability	Management														
Model	50	100	200	300	520	1020	1520	2020	3020	3520	5520	6020	Interceptor 9200	Clustered ³	CMC 8000/ SMC 8500													
Dual Power Supplies	-	-	-	-	-	-	-	-	✓	✓	✓	✓	✓	-	-													
Triple Power Supplies	-	-	-	-	-	-	-	-	✓	✓	✓	✓	✓	-	-													
Power (Watts) ⁴	31.5	31.5	31.5	31.5	206	206	206	206	425	425	425	425	425	-	206													
VA ⁴	55	55	55	55	207	207	207	207	433	433	433	433	433	-	207													
Amps ⁴	0.5	0.5	0.5	0.5	1.76	1.76	1.76	1.76	3.7	3.7	3.7	3.7	3.7	-	1.76													
BTU	107	107	107	107	646	646	646	646	1450	1450	1450	1450	1450	-	646													
Temperature	0 - 50 deg C / 32 - 122 deg F (Operating) -20 - 70 deg C / -4 - 158 deg F (Storage)				10 - 35 deg C / 50 - 95 deg F (Operating) -40 - 65 deg C / -40 - 149 deg F (Storage)				10 - 35 deg C / 50 - 95 deg F (Operating) -40 - 70 deg C / -40 - 158 deg F (Storage)				-				Same as Models 520 - 2020											
Relative Humidity ⁵	20% - 80% non-condensing (Operating) 5% - 95% non-condensing (Storage)				20% - 80% non-condensing (Operating) 5%-95% non-condensing (Storage)				20% - 80% non-condensing (Operating) 5%-95% non-condensing (Storage)				-				Same as Models 520 - 2020											
System Dimensions	1.75 x 8.75 x 6 in (4.4 x 22.2 x 15.2 cm)				1.69 x 17.6 x 21.5 in (4.27 x 44.7 x 54.61 cm)				-				5.2 x 17.7 x 25.5 in (13.2 x 45 x 64.7 cm)				-				1.69 x 17.6 x 21.5 in (4.27 x 44.7 x 54.61)							
Packaging Dimensions	4.75 x 12 x 13.75 in (12 x 30.5 x 35 cm)				13 x 25 x 35 in (33 x 64 x 89 cm)				-				13.75 x 27 x 34.5 in (35 x 69 x 88 cm)				-				13 x 25 x 35 in (33 x 64 x 89)							
Gross Weight	7.5 lbs / 3.4 kg				-				26 lbs / 12 kg				-				89 lbs / 40 kg				-				26 lbs / 12 kg			
Rail Information	N/A				Universal / Swiss Army (2 and 4 post) Orderable Part # CMP-RMK-DA000X. Min depth: 3 inches/8 cm (front mount). Max depth: 31 inches/78 cm				-				17 to 33 in (43 to 83 cm)				-				Universal/ Swiss Army (2 and 4 post)							

¹Inbound (WAN to LAN) Steelhead capacity is unrestricted; outbound WAN capacity can be expected up to the amount listed (On the 5520 and 6020 total WAN capacity equals inbound traffic + outbound traffic)

²TCP Connections can be expected up to the amount listed

³Any Steelhead model can be clustered

⁴Power ratings @ 110V

⁵Operating altitude up to 10,000 feet

The availability, export, or re-export of these products or specific features are subject to the export laws and regulations of the U.S. and the laws and regulations of any applicable foreign agency or authority.

(New) System Requirements: Steelhead Mobile

Steelhead Mobile software optimizes application performance over the WAN for the mobile workforce.

Operating System	Windows 2000 SP4, XP SP2, Vista
CPU	Celeron 1.5 GHz
Memory	512 MB
Data Store	1 GB free disk space (min. required)
Steelhead Appliance ⁶	Required
Steelhead Mobile Controller (SMC)	Required

(New) Software Specifications: Steelhead Mobile

Concurrent Clients Supported per SMC	2000
Concurrent Clients Supported with SMC Cluster ⁷	n x 2000
Steelhead Auto-Detection	✓
MSI Package Builder	✓
VPN Compatibility ⁸	Cisco, Nortel, Juniper, OpenVPN, Microsoft
Wireless PC Card Compatibility ⁹	Verizon, AT&T, Sprint

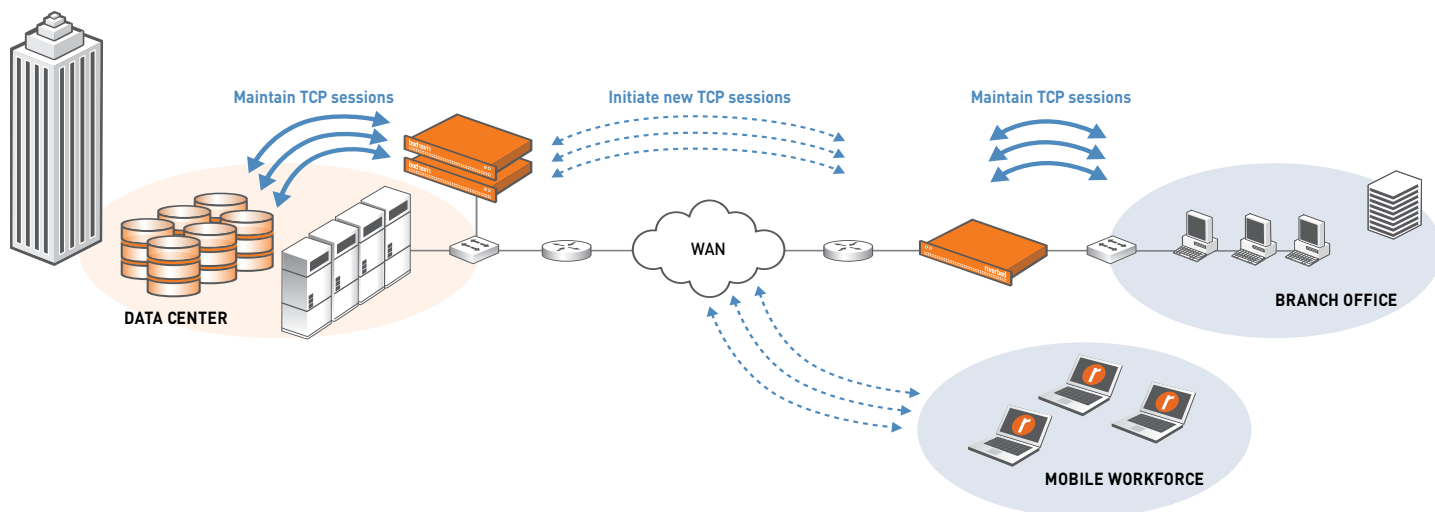
⁶At least one Steelhead appliance is required running RiOS version 4.x or higher

⁷SMCs can operate in clustered mode to support additional Steelhead Mobile clients

⁸Partial listing. VPN compatibility may be impacted by vendor software version, client configuration, and other factors. Refer to detailed CPN specifications at http://www.riverbed.com/steelhead_mobile/vpn_specs/ for more information

⁹Partial listing. Wireless PC Card compatibility may be impacted dependent upon hardware and driver versions, bundled software and other factors. Refer to detailed wireless specifications at http://www.riverbed.com/steelhead_mobile/wireless/ for more information

Typical Steelhead Deployment



About Riverbed

Riverbed Technology is the performance leader in wide-area data services (WDS) solutions for companies worldwide. By enabling application performance over the wide area network (WAN) that is orders of magnitude faster than what users experience ordinarily, Riverbed is changing the way people work, and enabling a distributed workforce that can collaborate as if they were local. Additional information about Riverbed (Nasdaq: RVBD) is available at www.riverbed.com.



WAN Optimization - Riverbed RiOS 3.0

Riverbed Technology, Inc.
199 Fremont Street
San Francisco, CA 94105
Tel: +1 415 247 8800
Fax: +1 415 247 8801
www.riverbed.com

Riverbed Technology Pte. Ltd.
350 Orchard Road #21-01/03
Shaw House
Singapore 238868
Tel: +65 68328082

Riverbed Technology Ltd.
1, The Courtyard, Eastern Road
Bracknell
Berkshire RG12 2XB
United Kingdom
Tel: +44 1344 354 910

Riverbed Technology K.K.
Shiba-Koen Plaza Building 9F
3-6-9, Shiba, Minato-ku
Tokyo, Japan 105-0014
Tel: +81 3 5419 1990

© 2007 Riverbed Technology, Inc. All rights reserved. Portions of Riverbed's products are protected under Riverbed patents, as well as patents pending. Riverbed Technology, Riverbed, RiOS, Steelhead, Interceptor, and the Riverbed logo are trademarks or registered trademarks of Riverbed Technology, Inc. SP-5HF072607